

BHTS ZZ 280°

Insert Bearings for Extreme Temperature Pillow Blocks for Extreme Temperature

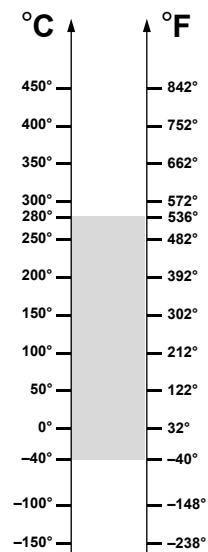
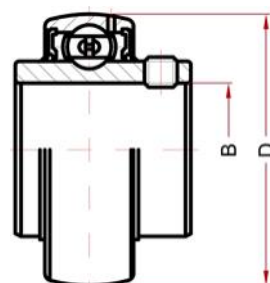


Technical characteristics:

- Bearing material: steel AISI 52100 (Chrome) stabilized to the application
- Treatment of manganese phosphate coating on all steel parts of the bearing
- Radial Clearance 4xC5
- Shields type ZZ
- Lubricated with PTFE based on silicone free grease for temperatures up to 280°C (with a dropping point above 400°C)
- Housing in Stainless Steel
- Pillow Blocks UCPA and UCT Series also available

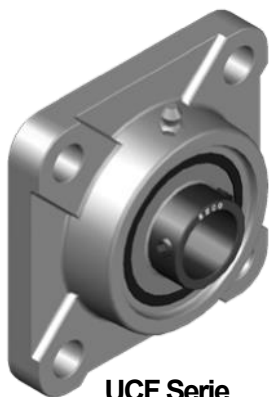
Fields of application:

- Paint Ovens
- Steel industry
- Furnaces for Ceramic Industry
- Trolley Industry, Trolleys for Brick Kilns Industry



UC SERIE

| Designation | Bore (B) | Diam (D) | Speed, RPM | Static Load, kN at 280°C | Static Load, kN at 20°C | Pillow Blocks suitable Housing codes | | |
|---------------------|----------|----------|------------|--------------------------|-------------------------|--------------------------------------|-----------|----------|
| | | | | | | F Serie | FL Serie | P Serie |
| UC 201 BHTS ZZ 280° | 12 | 47 | 1152 | 4,72 | 6,60 | F 204 SS | FL 204 SS | P 204 SS |
| UC 202 BHTS ZZ 280° | 15 | 47 | 1152 | 4,72 | 6,60 | F 204 SS | FL 204 SS | P 204 SS |
| UC 203 BHTS ZZ 280° | 17 | 47 | 1152 | 4,72 | 6,60 | F 204 SS | FL 204 SS | P 204 SS |
| UC 204 BHTS ZZ 280° | 20 | 47 | 960 | 4,72 | 6,60 | F 204 SS | FL 204 SS | P 204 SS |
| UC 205 BHTS ZZ 280° | 25 | 52 | 896 | 5,58 | 7,80 | F 205 SS | FL 205 SS | P 205 SS |
| UC 206 BHTS ZZ 280° | 30 | 62 | 704 | 8,00 | 11,2 | F 206 SS | FL 206 SS | P 206 SS |
| UC 207 BHTS ZZ 280° | 35 | 72 | 608 | 10,7 | 15,1 | F 207 SS | FL 207 SS | P 207 SS |
| UC 208 BHTS ZZ 280° | 40 | 80 | 544 | 13,0 | 18,2 | F 208 SS | FL 208 SS | P 208 SS |
| UC 209 BHTS ZZ 280° | 45 | 85 | 512 | 14,7 | 20,6 | F 209 SS | FL 209 SS | P 209 SS |
| UC 210 BHTS ZZ 280° | 50 | 90 | 480 | 16,5 | 23,1 | F 210 SS | FL 210 SS | P 210 SS |
| UC 211 BHTS ZZ 280° | 55 | 100 | 429 | 20,7 | 29,0 | F 211 SS | FL 211 SS | P 211 SS |
| UC 212 BHTS ZZ 280° | 60 | 110 | 384 | 25,3 | 32,6 | F 212 SS | FL 212 SS | P 212 SS |
| UC 213 BHTS ZZ 280° | 65 | 120 | 339 | 28,4 | 39,8 | F 213 SS | - | P 213 SS |
| UC 214 BHTS ZZ 280° | 70 | 125 | 320 | 31,9 | 44,7 | F 214 SS | - | P 214 SS |
| UC 215 BHTS ZZ 280° | 75 | 130 | 307 | 35,1 | 49,2 | F 215 SS | - | P 215 SS |



UCF Serie



UCFL Serie



UCP Serie



12100 Cuneo - Italy
phone: 0039 0171 66883
fax: 0039 0171 648913
www.becoitalia.biz